



www.milsoft.com.tr

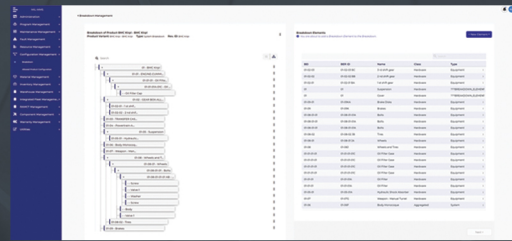
Mil-ILS supports military and non-military products compliant to S-series IPS specifications (S1000D up to S6000T) throughout the lifecycle starting from design & development by implementing logistics support analyses as well as producing technical data and publications before the delivery to the users, and upon delivery maintaining and sustaining the Product efficiently and effectively to optimize performance, cost and availability in the utilization period until it is disposed properly.



Functions

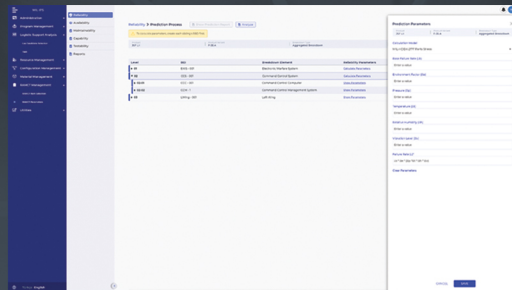
Common Functions

- Administrative (Person, Role, Permission)
- Program Management (Project, Contract, Product, Warranty)
- Configuration Management (Breakdown, Allowed, Actual)
- Workflows Management
- Resource Management
- Spare Parts Modelling and Optimization
- RAMCT Management
- Reporting
- Utilities



Integrated Product Support (IPS) Functions

- Logistics Support Analyses (MTA, LORA, RAMCT, LCC, ...)
- Product Breakdown and Configuration
- Material Management
- Training Needs Analysis and Design
- Preventive Maintenance Requirements and Intervals
- In-Service Data Feedback

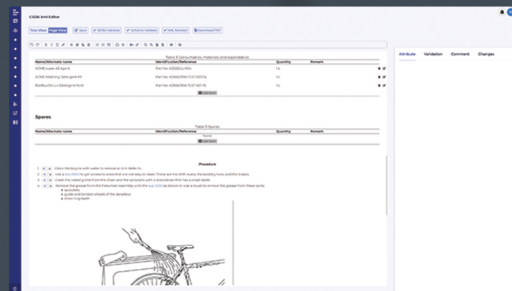


Obsolescence Management Functions

- Extracting, Filtering and Risk Assessment
- Prioritized List and Obsolescence Mitigation Approach

Technical Data and Publication Production Functions

- Common Source Database (CSDB) (Logic Engine, SCORM)
- Local Business Rules Management
- Special DMRL
- XML Editor (WYSIWYG)
- Legacy Data Conversion to S1000D
- PDF and IETP Publishing - IETP (online/offline)

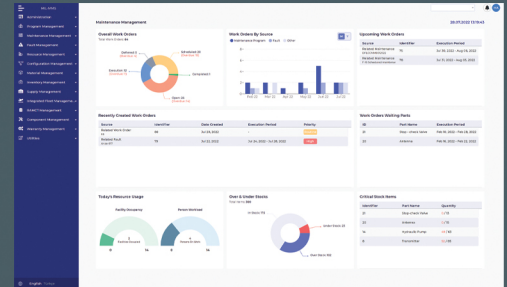


Technology Center

Functions

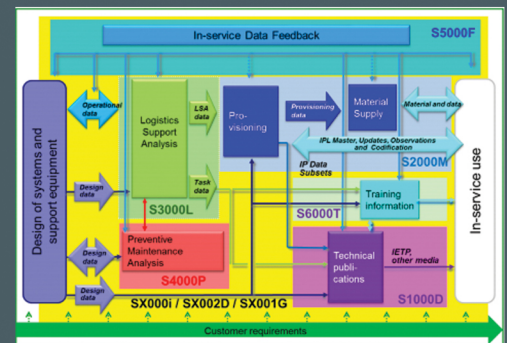
Maintenance Management Functions

- CSDB Based Maintenance and Data Transfer
- Maintenance Program Management
- Failure / Fault Management
- Work Order Management
- Inventory Management
- Supply Management (Warehouse, Pool, Stock)
- Component Management
- Integrated Fleet Management



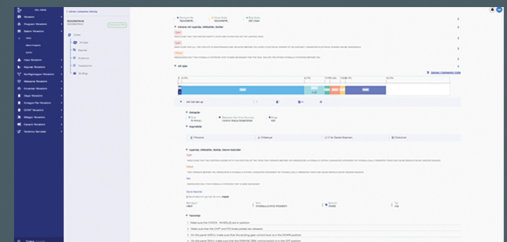
Technical Features

- Compliant to S-Series IPS Specifications (S1000D up to S6000T)
- Microservice Architecture and no additional License required.
- Modular, Scalable and Flexible Interfaces
- Platform (OS) Independent
- Portable Device Support
- Role Based Access
- External System Integration (ERP, PLM etc.)
- Multi-language Support
- User Friendly Screen Design



Benefits

- Interoperability through international S-Series Specifications
- Covers logistics support elements with integration
- Presents supportability solutions open to continuous improvement
- Performance, cost and operational readiness optimization
- Fast, accurate and consistent information transfer and updates
- Digital, interactive and remote training
- Product life-cycle support oriented
- Nationally developed and life-long supported
- Time and cost saving due to fast transfer of huge data



Why?

- Presenting a complete and integrated solution for Product Support and enabling partial purchase
- Serving as a tool for digitalization and Industry 4.0 revolution
- Optimization of logistic resources of customers for required availability, best performance and minimum cost
- Capability of analyzing present solutions to new arising situations and revising
- Capability of customized modifications and adding new developments any time as required.

