



www.milsoft.com.tr

# Mil-INTEL

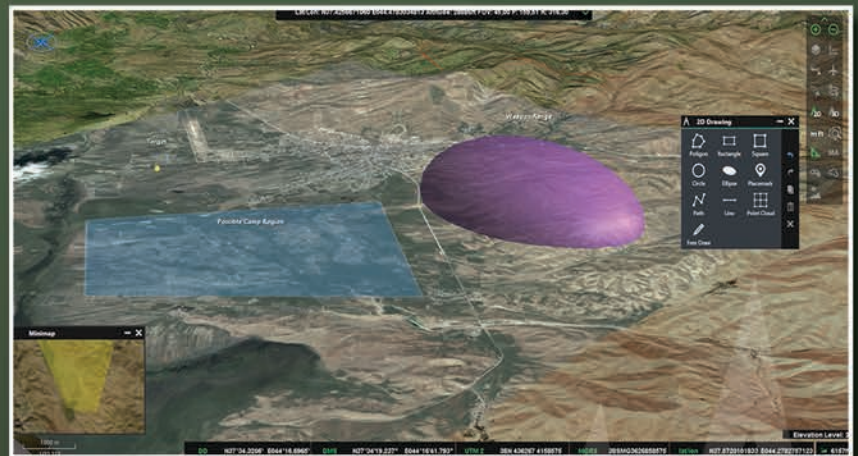
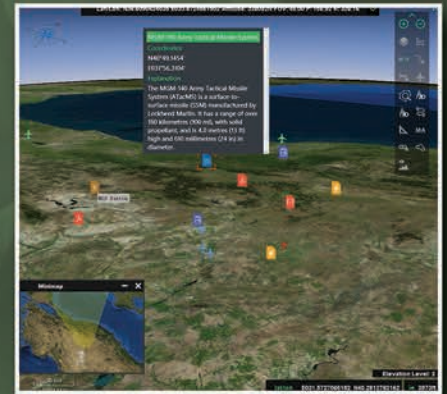
## Intelligence System

MilSOFT Intelligence System (Mil-INTEL) is designed for efficiently and effectively analyzing different types of intelligence data. This provides Intelligence Organization to turn massive amount of data to actionable high value information. Intelligence officers can search through every bit of data at high speed, extract significant intelligence, perform multi-dimensional analysis using different customized views and share it with other officers when necessary. When helping on-going operations which UAVs are on the air and troops are engaging with enemy, Mil-INTEL platform can show overall picture of operational area with different map views (2D/3D), provide video/sensor data in real time and perform enrichment with analytical tools.



### Functions

- 2D/3D Common Intelligence Picture
    - Live Video Projection on 3D View
  - 2D/3D Map Capabilities
    - Line of Sight
    - Flight Route Planning
    - Shortest Path
    - Measurement Analysis
    - Multi-map Synchronization
  - 2D/3D Drawing Capabilities
  - Drawing 2D Shapes on Live&Recorded Video
  - Search & Geo-Search
    - Keyword Search
    - Filtering and Grouping
    - Quick Search
    - Buffered Search
  - Annotation Capabilities
    - 2D/3D Map Annotations
    - Annotation on Video (Recorded or Live)
    - Dynamic Field Definition
    - Import&Export Annotations
  - Intelligence Sharing
    - Peer to Peer Messaging
    - Chat Room
    - Sharing Files & Coordinates
    - Sharing Coordinates
  - Annotation Project Management
  - Intelligence Workflow
- Image Exploitation & Analysis
    - Photogrammetry
    - Target Tracking
    - Super Resolution
    - Hot-Spot Detection
    - On-line SAR&GMTI Viewer
    - Still Image Editor



## Technology Center



**CMMIDEV / 5<sup>SM</sup>**  
Exp. 2022-12-06 / Appraisal #5069



## Technical Features

Compatible with following NATO Standards

- STANAG 4559
- STANAG 4607/4609
- STANAG 3596
- STANAG 7023
- STANAG 3277
- STANAG 3377

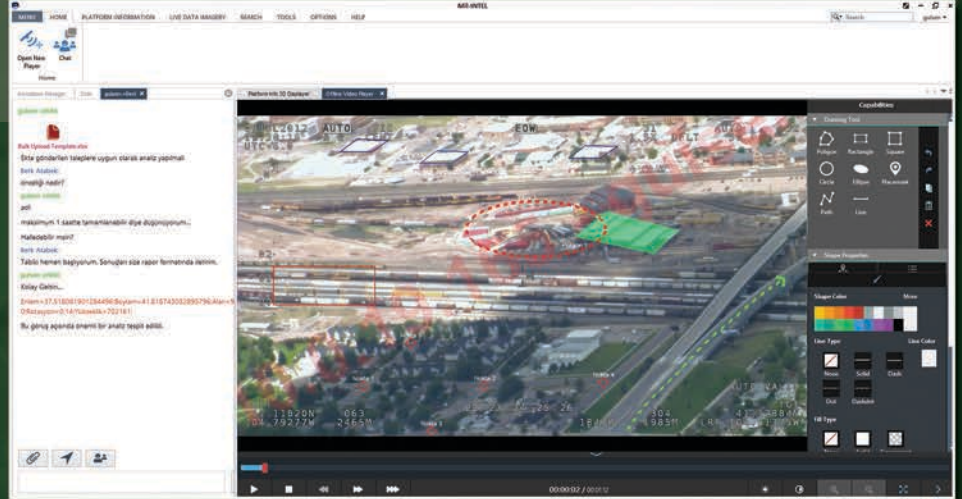
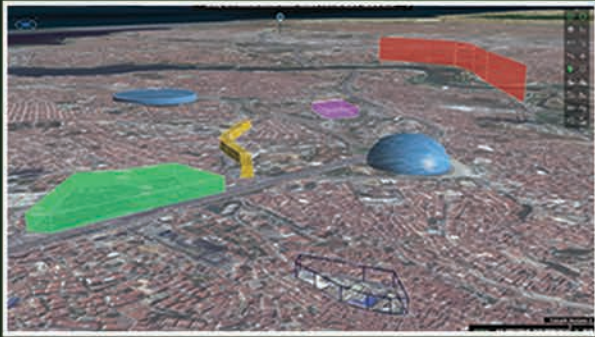
Different Sensor Integration Capability

- SAR
- GMTI
- EO/IR

Following files and services supported for 2D/3D Map viewer

- WMS (Web Map Service)
- VFS
- ECW, JPEG2000, GEOTIFF, TIF, NTIF, NSIF
- DTED (Digital Terrain Elevation Data)

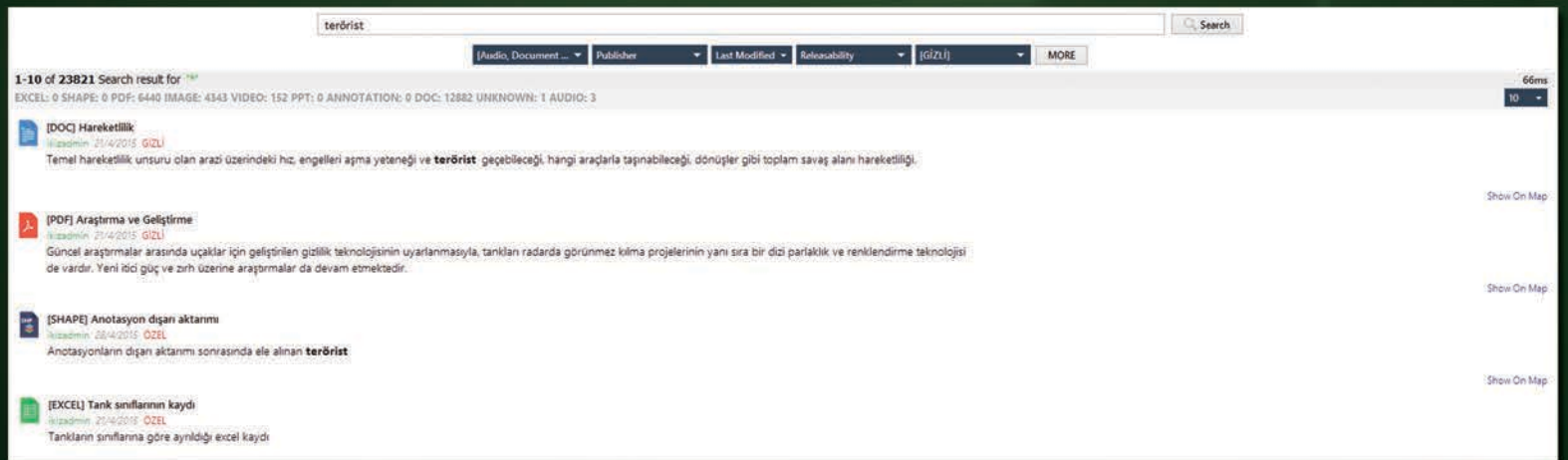
RTP&RTSP Protocols supported for video



## Benefits

Mil-INTEL helps organizations to:

- Transform raw data to high value intelligence through analytical tools
- Extract insight from massive amount of data
- Increase organizational efficiency through common and collaborated environment
- Secure data with "need-to-know" and "need-to-share" basis
- Integrate existing infrastructures via scalable and service oriented platforms
- Improve situational awareness through customized views
- Maintain disparate structured data through dynamic databases



## Why ?

- Improved situational awareness
- Compatible with NATO Standards
- Service Oriented Platform
- Intelligence and Tactical Oriented
- Scalable