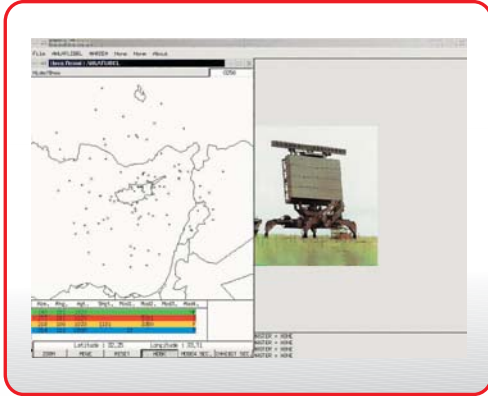




RC2IS Radar Command and Control Integration System



www.milsoft.com.tr



Radar Command and Control Integration Software was specifically developed to integrate different types of radars to the Command and Control (C2) sites such as NATO Air Defense Ground Environment (NADGE). The integration consists of transferring the plot data received from the radar to the Command and Control system so that the plots can be evaluated by C2, and to remotely control the radar. The software converts the radar plot messages received from the native radar link to the dedicated C2 site system format in order C2 site to understand and process the plot messages. From this point of view, the software acts as a gateway between the radar and C2. Besides, the easy to use GUI lets the operator located at C2 site to remotely send control messages to the radar. The software also shows the radar plots on a digital vector map and lets the operator to access information on any of these plots. Radar Command and Control Integration Software is capable of controlling and connecting up to four radars to the C2 site simultaneously.

System Features

- C/C++ programming language
- Linux operating system
- Separate units for radar interface and radar control
- NATO RSRP interface
- Radar interface
- Real-time message conversion
- Message based communication

System Functions

- Controlling up to four radars at the same time
- Converting and transferring up to four radars' plot messages to C2
- Sending radar command & control messages through easy to use GUI
- Remote control of radar
- Status information about links and radar
- Recording (plot and control messages)