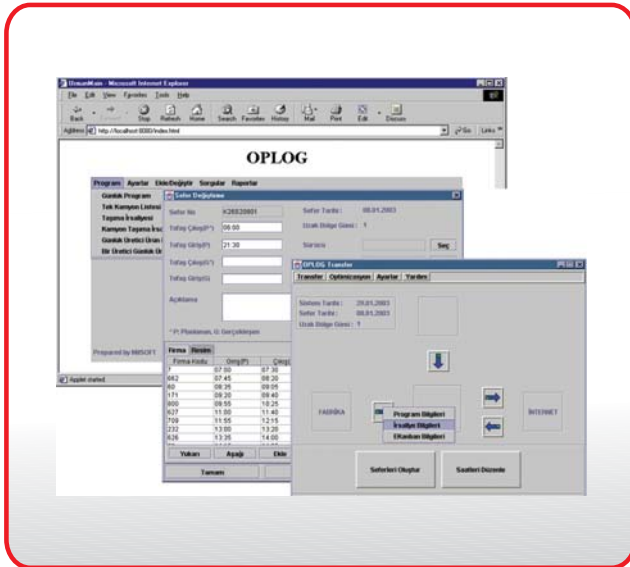




OPLOG Optimum Logistics System



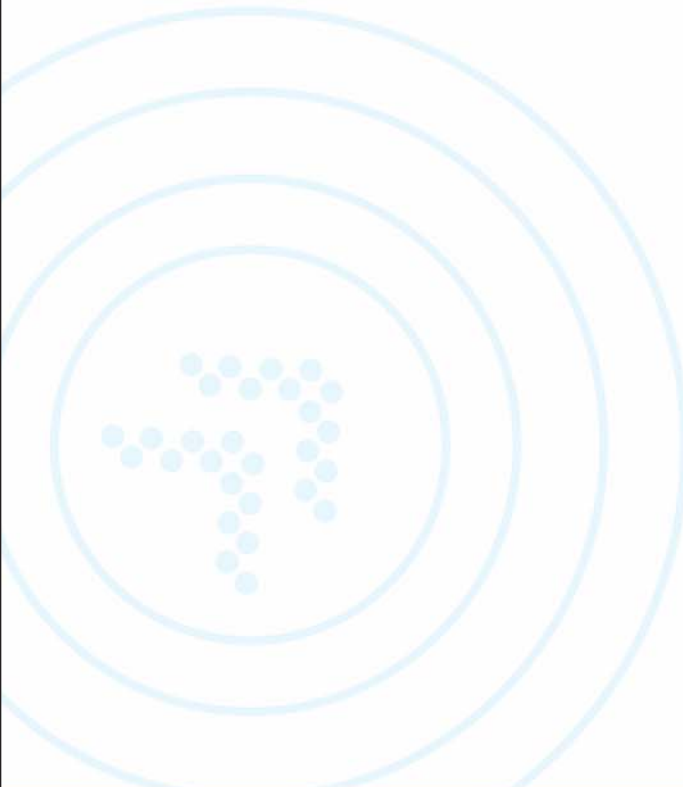
www.milsoft.com.tr



Optimums Logistics System (OpLog) is a web based information system developed to optimize and integrate the logistics operations. OpLog system aims to decrease the uncertainties and risks associated with the transportation of raw & semi-finished products from the suppliers to the factory and to form optimum transportation schedules. Oplog software is currently being used by a logistics firm for the management and optimization of 1500 monthly deliveries.

System Features

- Java programming language
- Windows NT, Linux operating systems
- Oracle 8i and PostgreSQL database
- Optimization Algorithm
- Querying function according to various criteria
- Secure internet interface
- Integration capability with existing software and databases
- Automation of factory
- Supplier coordination via World Wide Web
- Easy adaptation to customer requirements
- User friendly GUI





OPLOG Optimum Logistics System



www.milsoft.com.tr



System Functions

Logistics Firm User Interface

- Optimizes deliveries of a date, according to factory, supplier, truck, package, locations, predefined schedule constraints to transport orders with minimum truck use.
- User can add delivery plans or update the delivery plans, which are generated by optimization manually via screens that are user friendly, that prevents user's faulty actions, that calculates load automatically and that organizes the times of deliveries.
- Accomplished delivery data can be transferred from external systems, planned and accomplished delivery data can be compared and delivery, supplier, ramp, truck can be evaluated.
- Easy synchronization between web server, factory databases and accomplished data provider application.
- User accounts for the supplier firms can be identified,
- All the information supplied by the system can be queried in detail, detailed reports can be generated and printed out.
- Can print the waybills, on the Logistics Firm's Waybill forms,
- Delivery codes can be printed out to delivery reports as barcode images using various barcode standards.

Supplier Firm User Interface

- Supplier firms can view the factories' orders to themselves via World Wide Web.
- Supplier firms can update the orders or add new deliveries until a time that is specified by the Logistics firm,
- Supplier firms can view the arrival times of the trucks to themselves,
- Supplier firms can change their passwords.

Factory User Interface

- Factory users can query the orders and the suppliers' updates on them via World Wide Web.
- Factory users can query the planned and accomplished deliveries

