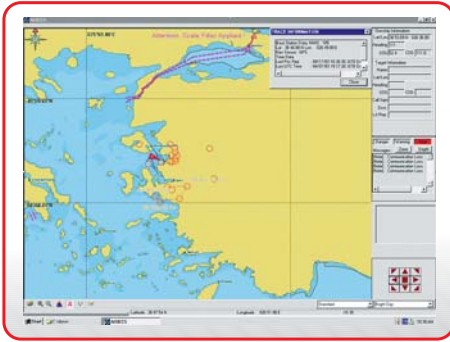




AIS Automatic Identification System ECS Electronic Chart System Software

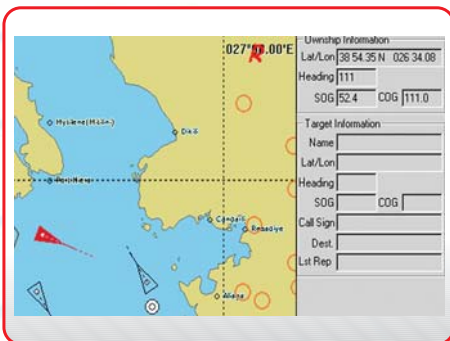
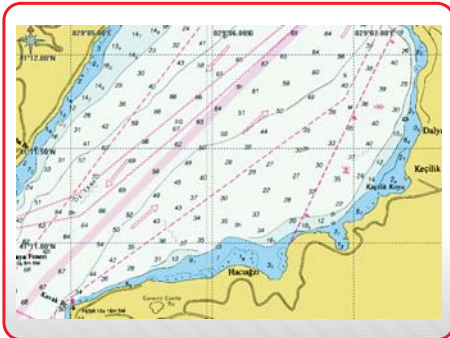


www.milsoft.com.tr



S-57 Chart Display

Automatic Identification System (AIS) is a technology that enables the tracking of vessels by Base Stations located in fixed positions on the coastline and by other vessels ('Mobile Units'). AIS Application Software provides a system, which exchanges information with AIS transponders in a standardized format and display this information on Electronic Chart System (ECS).



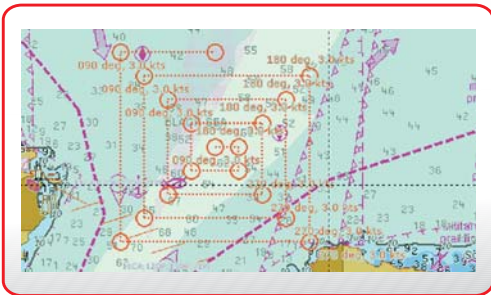
ARCS Chart Display

System Features

- C++ Programming Language,
- CORBA interface available upon request,
- Handling and display of AIS Transponder data in NMEA 183 v3.01 compatible protocol in accordance with the latest edition of SOLAS as recommended by IMO,
- Compatible with transponder systems manufactured in compliance with IMO, IEC and ITU-R M.1371-1 standards,
- Display of S-57 official electronic charts issued by the National Hydrographic Offices and Admiralty Raster Chart Service (ARCS) data formats produced by the UK Hydrographic Office,
- S-52 symbology support,
- User friendly presentation layer,
- Flexible architecture suitable for tactical-strategical environments,
- Available for customization & integration with existing systems, Dbs.



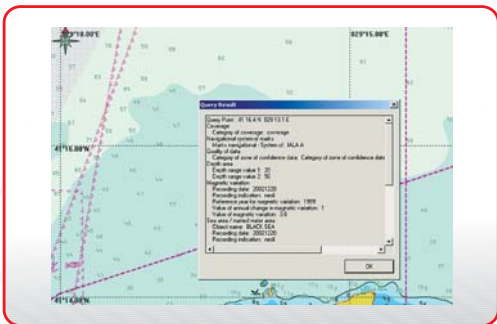
System Functions



SAR Plan



Route Configuration

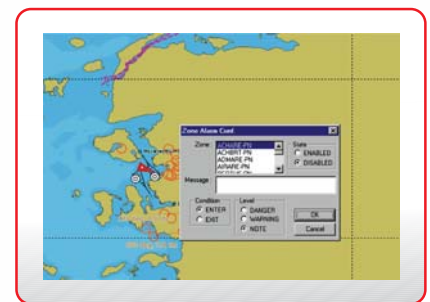


Track Query

- Automatic plotting of the vessels' positions on electronic charts,
- Continuous recording of time-stamped navigational AIS transponder data,
- Exchanging data with transponders over serial (RS-232) interface,
- Transfer of free text messages between vessels / base stations / control centers,
- Continuous reporting and display of ownship data on ECS,
- Display of static and voyage related data of the ownship and other selected vessels,
- Planning, creation and maintenance of Search and Rescue (SAR) operations,
- Generation of alarms on various dangers / warnings to navigation (zone, depth alarms),
- Vessels' route planning on ECS and maintenance of routes,
- Performing Query / Query Track Operations on selected objects,
- Inserting / Deleting Zone & Point Objects, Waypoints,
- Replay of logged transponder data.



Point Object Insertion



Alarm Creation